

DL-E 06-165/T-EN54 safe

- high sound pressure level
- low mounting depth
- with optional fire dome BS 5839 compliant



EN54



EN 54-24:2008
Ref. Nr.: 012-13
ID-Code: SAA-LS12
1438-CPR-0347

ic audio GmbH, Boehringerstraße 14a,
D-68307 Mannheim, Germany

CE-Symbol gemäß Richtlinie 93/68EWG

The 6W powered speaker is equipped with a 165mm full-range loudspeaker and a 100V transformer with 3 power adjustments. The powder-coated metal version in RAL 9016 guarantees lasting stability. Thanks to an innovative airflow system, the DL-E provides sound characteristics normally attributed to a conventional bass speaker. An extremely flat construction method allows a low mounting depth of only 70mm, with less than 1 kg product weight.

For additional safety, a 4-pin ceramic block and a thermal fuse are provided and the speaker is impregnated against dampness. Protection class IP 21C secures the speaker against the impact of environmental influences.

Quick and easy mounting with spring clamps and short tension distance. Perfectly suitable for installations where the mounting depth is very limited. In combination with the optional fire dome FE-165-EN54, the speaker is compliant with the British Standard BS 5839, Part 8. Special paint of the speaker in 4-digit RAL- or NCS-colour available at extra cost.

The innovative PET-plastic contact protection is included in the delivery and protected by a European patent (publication no. **2768238**).

This speaker is suitable for a ceiling strength of about 3-45 mm. Our specification is primarily related to solid ceilings, for ceilings with soft materials, a higher ceiling thickness could be necessary. In addition, stronger cables and other fittings may also result in changes to the appropriate setup. With regard to the variety of materials and manufacturers, we recommend building a sample of the speaker to match the requirements accurately.

Technical Data (Electrical)

| | |
|----------------------------|--------------------------------------|
| Description | DL-E 06-165/T-EN54 safe |
| Power | 6/3/1,5 W |
| Impedance (100V) | 1667/3333/6667 ohm |
| Frequency Range | 300 - 19.300 Hz |
| Frequency Response | 70 - 23.500 Hz |
| SPL IEC268-5, 1W/1m | 91,0 dB (plastic) 90,0 dB (metal) |
| SPL EN54-24, Pmax/4m | 85,0 dB |
| Sensitivity EN54-24, 1W/4m | 79,2 dB (plastic) 78,0 dB (metal) |
| Sensitivity EN54-24, 1W/1m | 91,2 dB |
| Dispersion -6dB, 500Hz | 180° |
| Dispersion -6dB, 1KHz | 180° |
| Dispersion -6dB, 2KHz | 135° |
| Dispersion -6dB, 4KHz | 60° |

Please note: Because of many different types of ceiling materials and ceiling strengths we recommend to build in a sample of the speaker to match the requirements accurately.

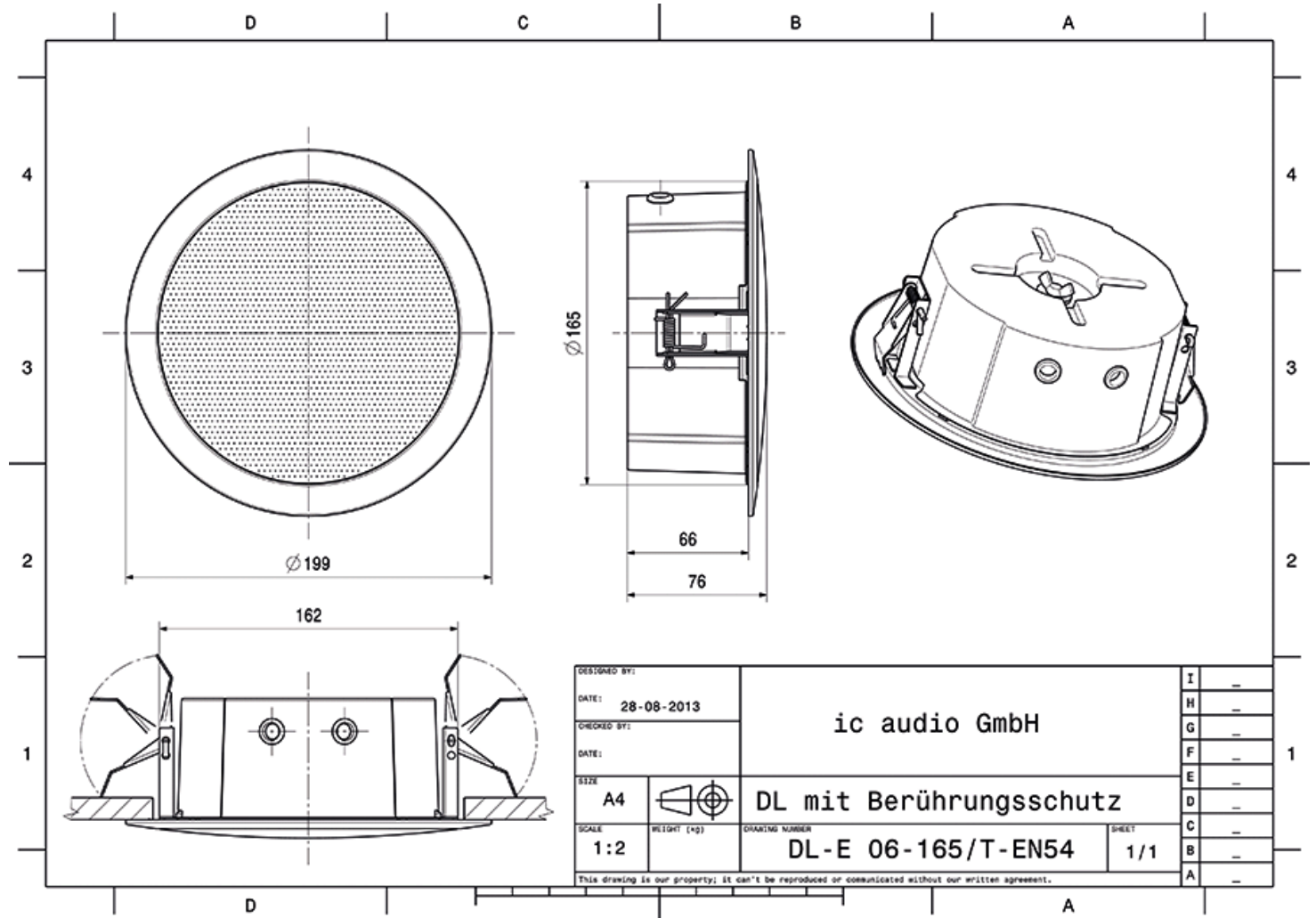
Technical Data (Mechanical)

| | |
|-----------------------|---------------------|
| Dimensions | 199x76 mm |
| IP Rating | IP21 |
| Weight (net) | 0,68 kg |
| Ceiling Cut-out | 166 mm |
| Temperature range | -10 / +55 °C |
| Mounting | spring clamp |
| Connector | 4-pin ceramic block |
| Terminal diameter | 3,2 mm |
| Maximum cable passage | 8mm ² |
| Colour | RAL 9016 |

Product Attributes

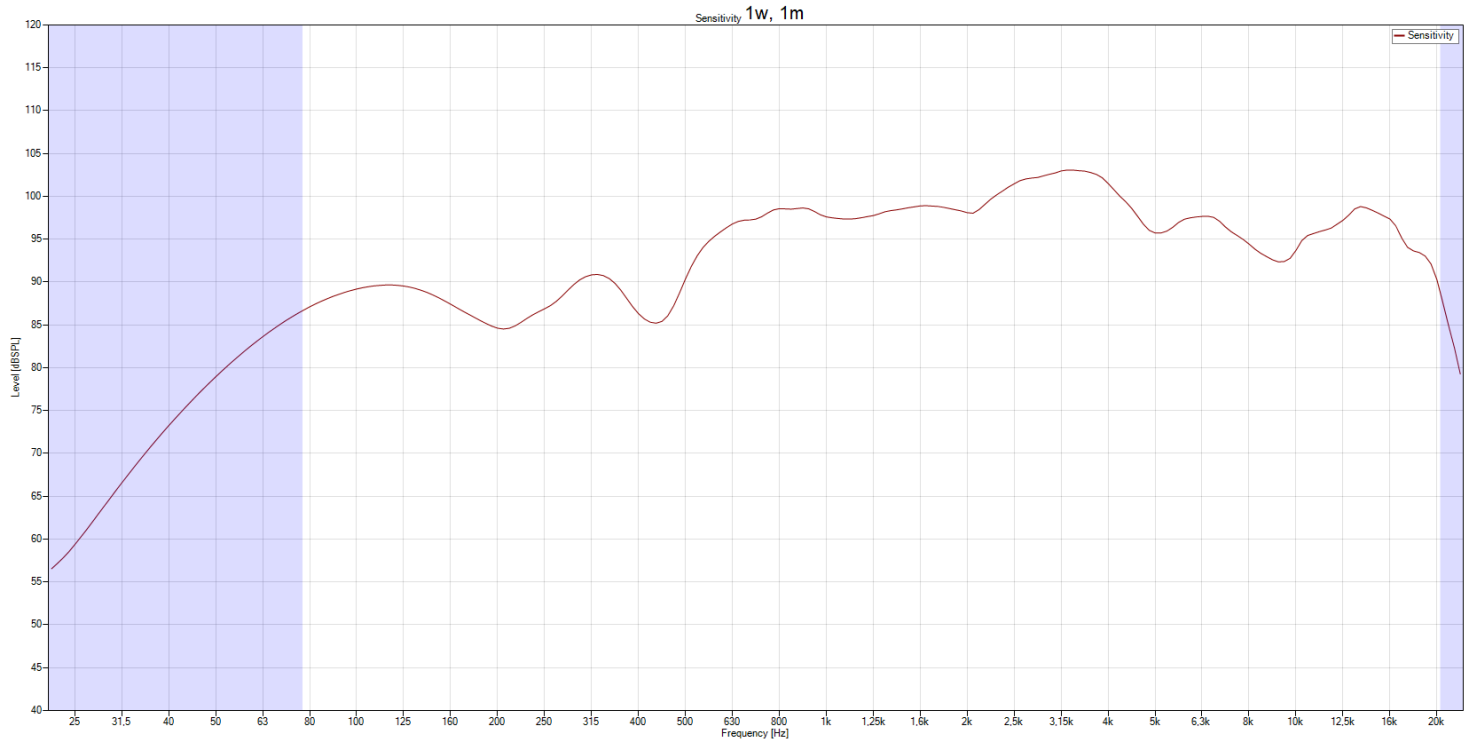


Technical Drawing

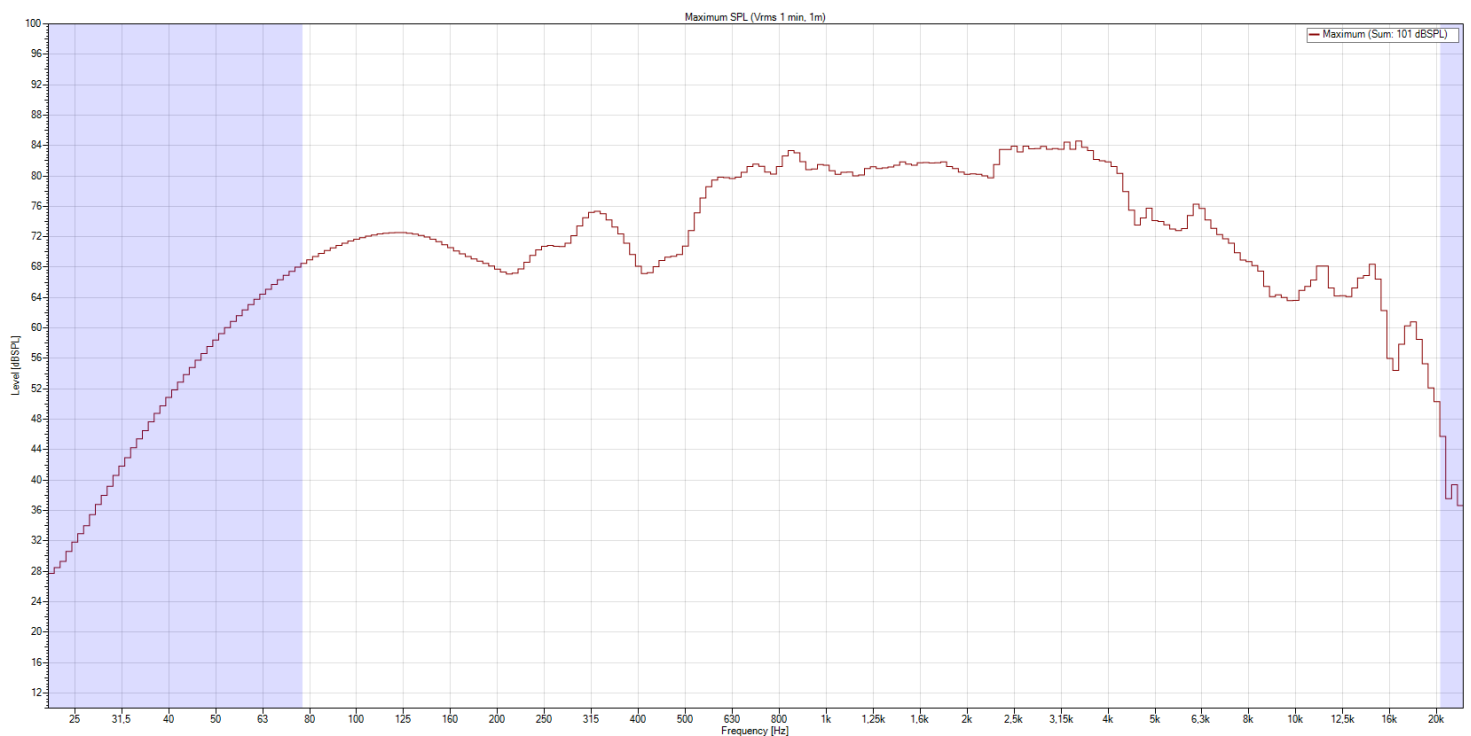


Frequency Response Diagram

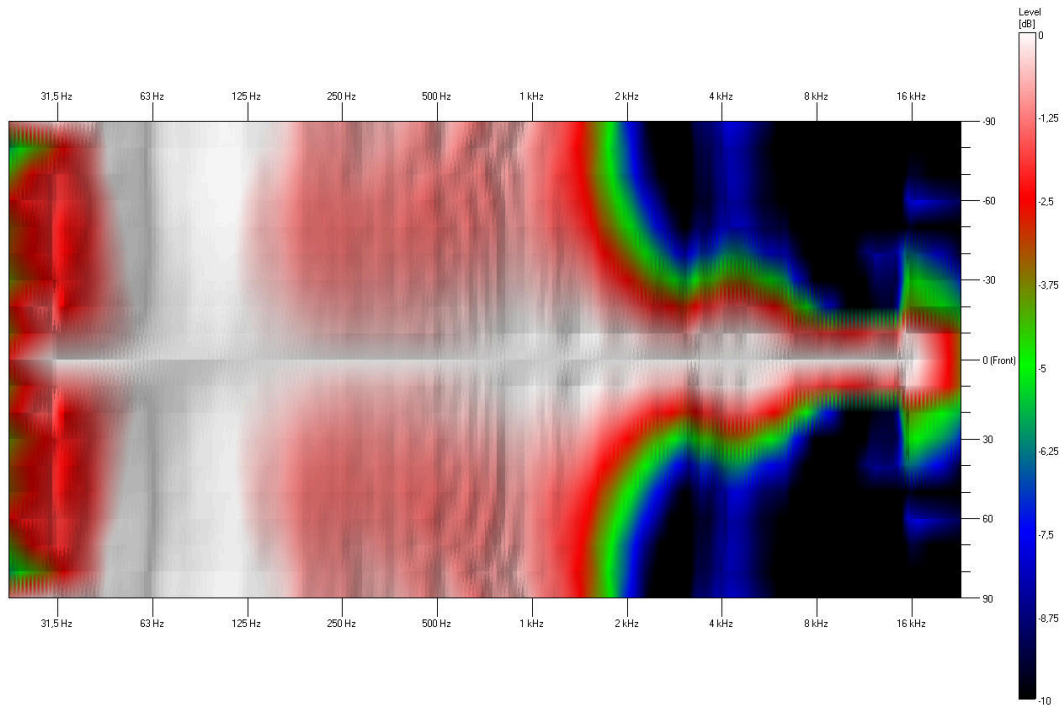
Sensitivity



SPL Max

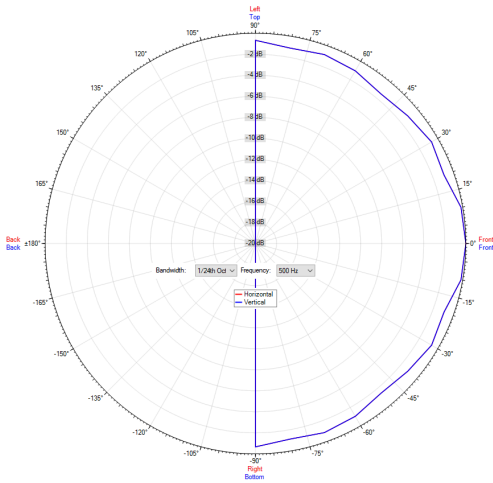


Isobar

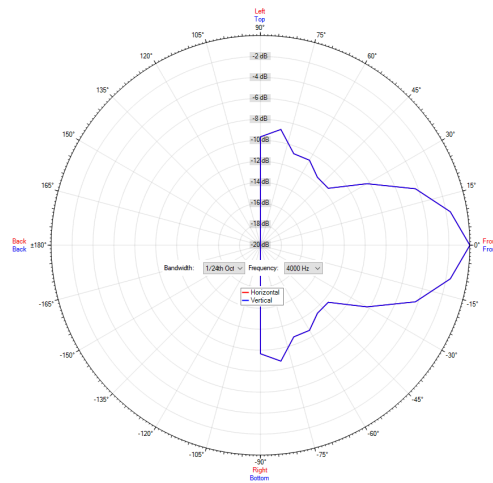


Polar Diagram

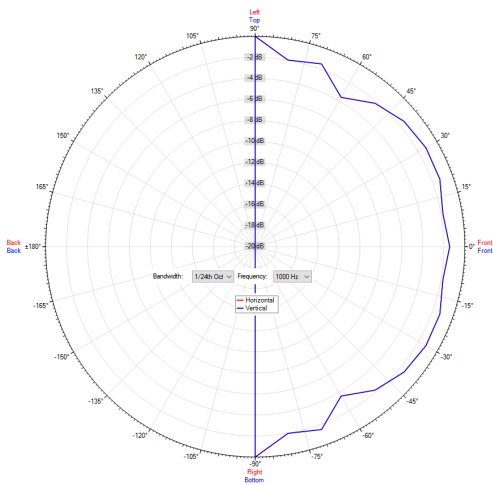
Polar Diagram 500Hz



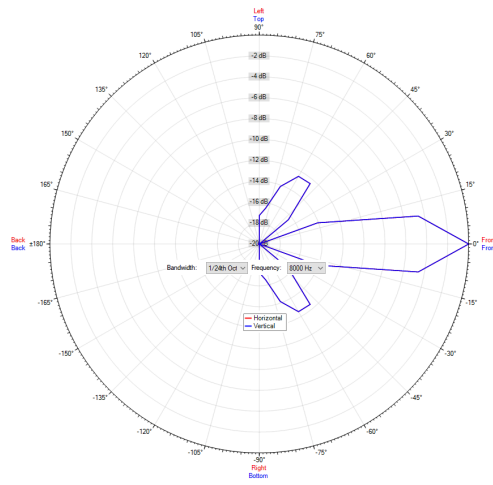
Polar Diagram 4000Hz



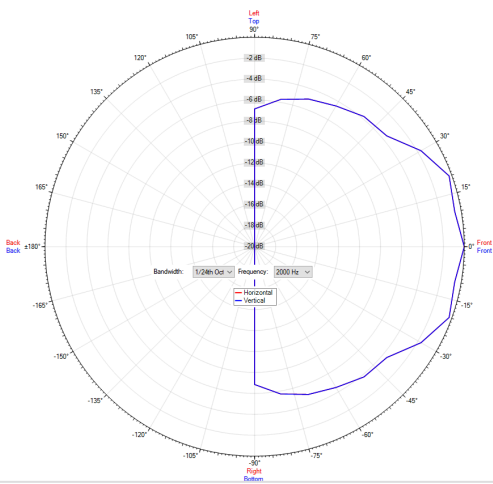
Polar Diagram 1000Hz



Polar Diagram 8000Hz



Polar Diagram 2000Hz



ic audio loudspeakers are tested and classified according to the IEC standard 60529 (degree of protection by enclosure) against the penetration of foreign objects and moisture. The classification is conforming to standards through characterization with a fixed code. This code consists of the letters IP (International Protection) followed by two digits. The first digit indicates the degree of protection against dust and the second digit the degree of protection against water. Please note that the testing of the products has been carried out in laboratory conditions which are not always 100% comparable with the conditions of different installation environments. This protection can be reduced due to normal wear and tear depending on the installation environment.

RoHS compliant (2011/65/EU)

The IP rating specified is based on ic audio test results, not on CNBOP-PIB test results. Certification only verifies the minimum requirements for EN54-24 compliance.



Article Nr.: 20132653S
Packing Unit: 12

